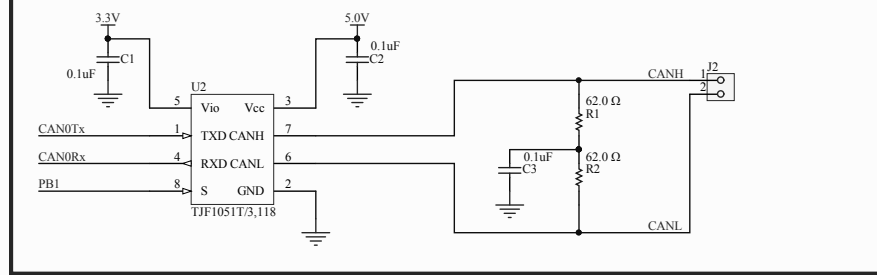
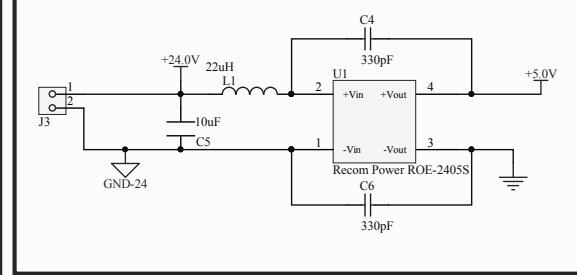


Comment	Description	Designator	Footprint	LibRef	Quantity
Walsin Technologies 0603B104K5 00CT	Multilayer Ceramic Capacitor, 0.1 F, 10%, X7R, 50 V, 0603 [1608 Metric]	C1, C2, C3	PCB-xa8iw5fabk20w47h075k-1	CMP-be387595950561ff-2	3
AVX Interconnect / Elco 06031C331K AT2A	CAP CER 330PF 100V 10% X7R 0603	C4, C6	CAPC1608X90X35L115T15	CMP-19299435-2	2
CAP, 10uF 0603	KEMET C0603C106 M9PACTU	C5	CAP_0603 WIDE WIDTH	CMP-12642840-10	1
SVM-492d800f668396ea-1	0.1uF Surface Mount, MLCC 0603 (1608 Metric) Package Ceramic Capacitors	C7	PCB-jj11vlv5ilxiwprnyajm-1	CMP-1267995	1
Murata GRM188R60G106ME47D	CAP CER 10UF 4V 20% X5R 0603	C8	CAPC1608X90X35ML10T15	CMP-1213673	1
Molex 22-284167	KK8 254 Breakaway Header, Vertical, 16 Circuits, 0.76mm Gold (Au) Selective Plating, Mating Pin Length 8.13mm	CON*	HDR_1x16	CMP-d3a11aa831f90c66-5	1
SD0603504050R2	Small Signal Schottky Diode, Single, 40 V, 200 Ma, 450 Mv, 2 A, 125 C	D1, D2	PCB-gt0rymv9acrykig6g1jm-1	CMP-92b65ac0da634d71-4	2
Samtec ESQ110-24-T-D	Conn Elevated Socket SKT 20 POS 2.54mm Solder ST Thru-Hole Tube	J1	PCB-wyksck3reziug28ymfj-1	CMP-d4261d8edd050be1-2	1
Molex 90120-0762	2.54mm (.100") Pitch C-Grid III? Header, Single Row, Vertical, 1 Circuits, Gold (Au) Plating	J2, J3, J4	PCB-55ilon6gpk2h6a06nz0l-1	CMP-8fae46aeaafe5069-36	3
Murata LQH43CN220K03L	Murata Thick Film Resistors - SMD 0603 62.0ohms 1% Tol	L1	MURA-1812_AP151	CMP-0a3ec339b906d5f9-1	1
Panasonic ERJ-3EKF6Z2R0V	Resistors - SMD 0603 62.0ohms 1% Tol	R1, R2	RESC1608X55X30L115T15	CMP-3685848-2	2
Adafruit Industries 356	Standoff; Female; Hinged Threaded; 8-32 Thread; 1.00 Length	R3	PCB-sznwc992fbwu4dwukh8x-1	CMP-8a3a42ffd30f55fd-1	1
Res1	Res Thin Film 0603 10K Ohm 0.1% 1/16W ±25ppm/°C Molded SMD SMD Paper T/R	R4, R5	PCB-ojnm16i5yp9tw7iv4n-1	CMP-7ef6b6a6b158a131-1	2
Vishay Dale CRCW06032K40JNEA	RES SMD 2.4K OHM 5% 1/10W 0603	R6, R7	RESC1609X50X30ML10T20	CMP-1856104-2	2
Recom Power ROE-2405S	ROE Series 1 W 24 V Input Single Output 5 V Isolated DC/DC - Converter - SIP-4	U1	PCB-9zoqrdxnwa f24p4a0679-1	CMP-f1773ba224ef2eb0-2	1
TIF1051T/3.18	TIF1051 Series 5.5 V 5 Mbps Surface Mount High Speed CAN Transceiver-SOIC-8	U2	MAXM-S8+4_L	CMP-4b038317f93a94c4-1	1
ILD205T	OPTOISO 4KV 2CH TRANS 8SOIC	U3	PCB-1524708-1	CMP-1524708-5	1
LD1117533C	Fixed Low Dr	U4	SOT-223_N	CMP-117039	1

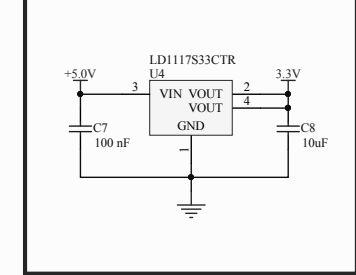
CAN Tranciever



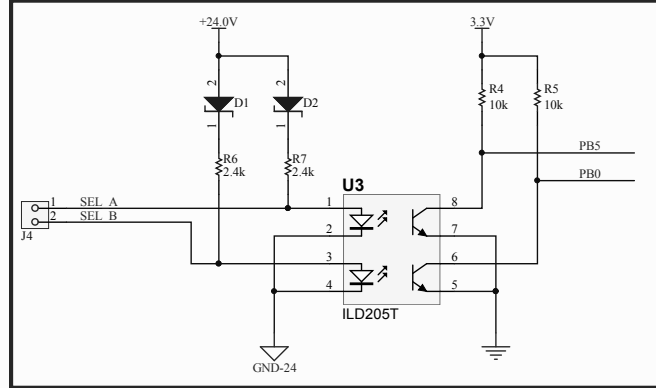
5V Power, 24V Input



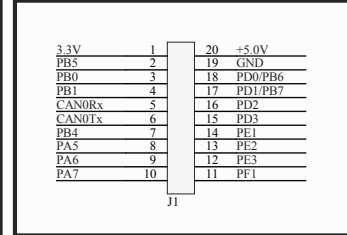
3.3V Supply



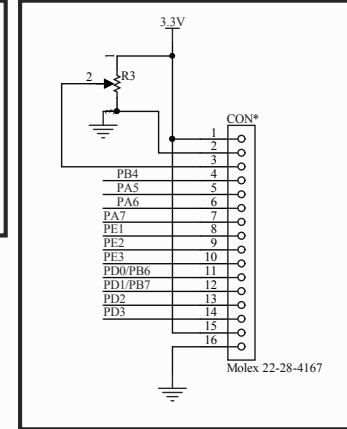
PLC Interface



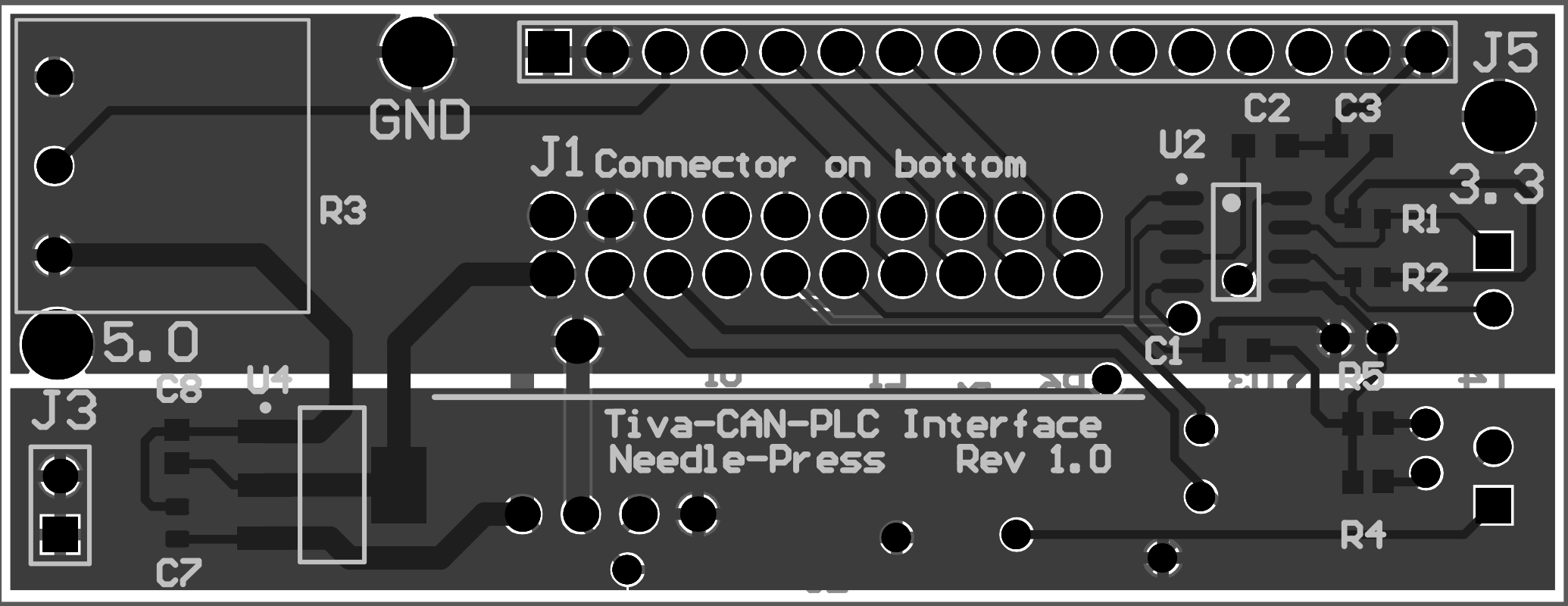
Tiva I/O Connector



LCD Interface



Title		
Size	Number	Revision
B		
Date:	1/9/2019	Sheet of
File:	Sheet1.SchDoc	Drawn By:



Design Rules Verification Report

Filename : C:\ProgramData\Altium\CircuitMaker {5028051A-F9E3-4B0C-A31C-394BA9628B02}\Projects\E5E36FD3-2CD8-4D85-81A3-8F768E1EFB3F\17e26eb-48d5-4821-a38c-d19c925f11d0\PCB1.CMPcbDoc

Warnings 0
Rule Violations 0

Warnings	
Total	0

Rule Violations	
Unpoured Polygon (Allow unpoured: False)	0
Silk primitive without silk layer	0
Silk to Silk (Clearance=1mil) (All),(All)	0
Silk To Solder Mask (Clearance=0mil) (IsPad),(All)	0
Minimum Solder Mask Sliver (Gap=0.5mil) (All),(All)	0
Hole To Hole Clearance (Gap=10mil) (All),(All)	0
Height Constraint (Min=0mil) (Max=1000mil) (Preferred=500mil) (All)	0
Hole Size Constraint (Min=8mil) (Max=100mil) (All)	0
Un-Routed Net Constraint (All)	0
Short-Circuit Constraint (Allowed=No) (All),(All)	0
Power Plane Connect Rule(Relief Connect)(Expansion=20mil) (Conductor Width=10mil) (Air Gap=10mil) (Entries=4)	0
Width Constraint (Min=10mil) (Max=40mil) (Preferred=15mil) (All)	0
Clearance Constraint (Gap=5mil) (All),(All)	0
Net Antennae (Tolerance=0mil) (All)	0
Total	0

Electrical Rules Check Report

Class	Document	Message
Warning	Sheet1.SchDoc	Net CAN0TX has no driving source (Pin J1-6,Pin U2-1)
Warning	Sheet1.SchDoc	Net PB1 has no driving source (Pin J1-4,Pin U2-8)
Warning	Sheet1.SchDoc	Off grid at 77.5,485
Warning	Sheet1.SchDoc	Off grid at 572.5,815
Warning	Sheet1.SchDoc	Off grid at 727.5,805
Warning	Sheet1.SchDoc	Part R4 is not linked to Octopart
Warning	Sheet1.SchDoc	Part R5 is not linked to Octopart
Warning	Sheet1.SchDoc	Part U2 is not linked to Octopart