

NOTE:  
TI SN74LV125 devices must be used since they are 5V I/O tolerant.  
Similar devices from other manufacturers may not be.

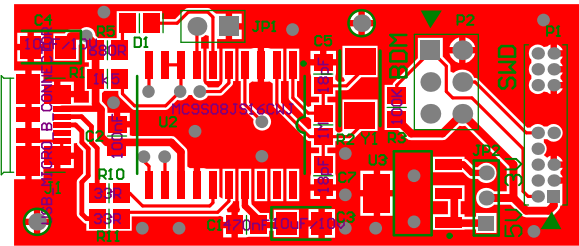
Revision:  
1.0 1st Release  
1.1 Added missing Gnd connection on PCB  
2.1 Added regulator etc

BDM Interface

Notes:  
JP1 - Tie to ground to force ROM Boot Loader Mode. Only for initial program load.  
This version only supports HCS12, HCS08, & CFV1, Kinetis (SWD)  
It does not support RS08 or CFV2,3,4 devices  
It does not supply target power.  
It does not have external target reset detection.

USB Interface

Title USBDM_SWD_JS16CWJ.SchDoc		
Size A4	Number	Revision 2.2
Date: 20/01/2017	Sheet of	
File: C:\Users\...\USBDM_SWD_JS16CWJ.SchDoc	Down By:	



P4 USBDM\_SWD\_JS16CWJ V2.2

47R

47R

47R

R9

R7

R6

100K

100nF

C6

R8

100K

C10

4u7x6V

C8

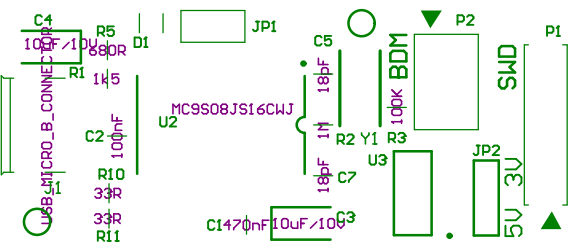
1uF

CH5E1A71254D  
U1

C9

100nF

DSHW



MINI SMD C050F-2



C9 100nF



USBDM\_SWD\_JS16CWJ V2.2

SN74LV125AD

R4

47R

R9

47R

R7

47R

R6

100K

C6

100nF

C10

4u7/6V

C8

1uF

R8  
100K

## USBDM\_SOIC20\_JS16(Minimal)