

A

B

C

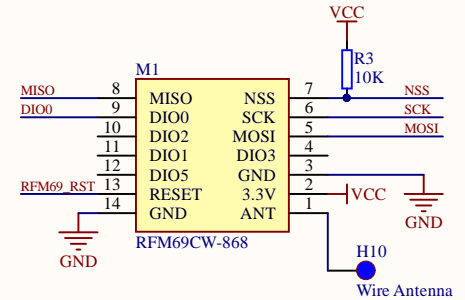
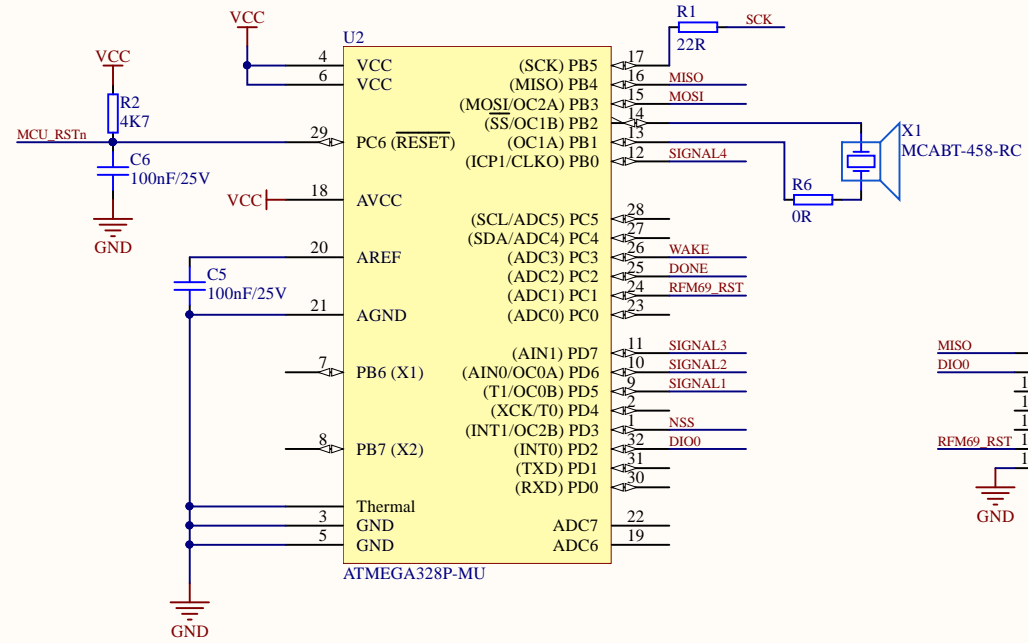
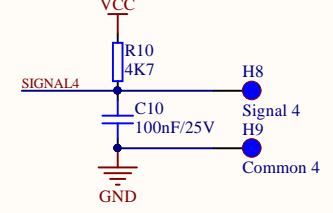
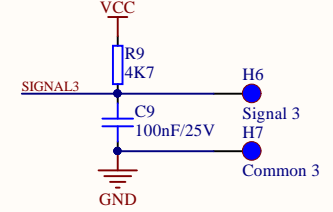
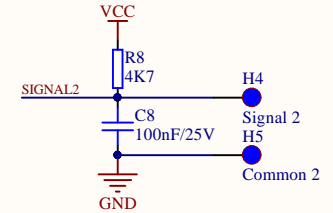
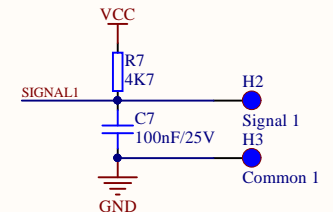
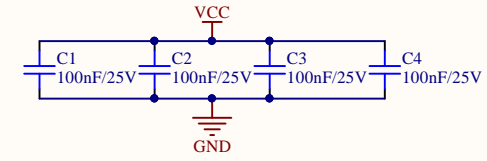
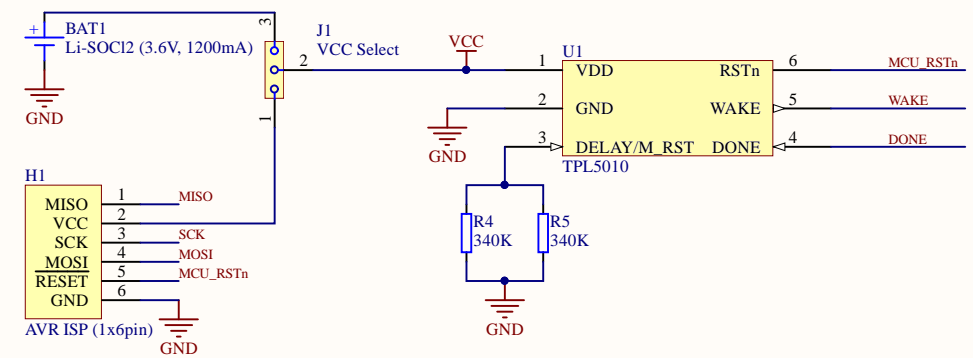
D

A

B

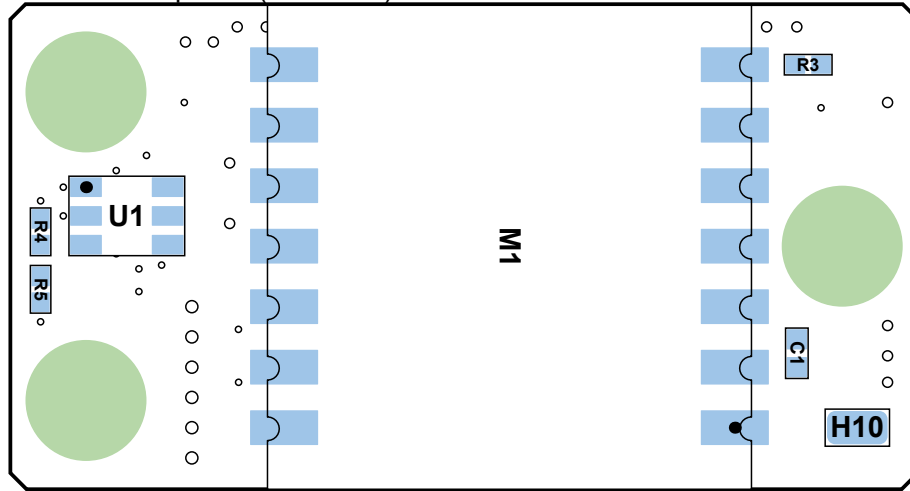
C

D

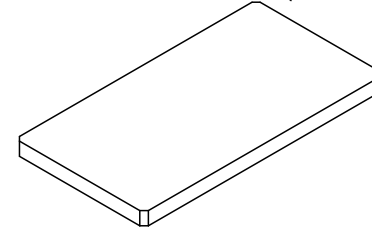


Title		
Size	Number	Revision
A4		
Date:	4/02/2018	Sheet of
File:	C:\Users\...\Wallswitch.SchDoc	Drawn By:

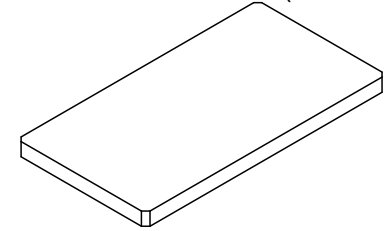
View from Top side (Scale 4:1)



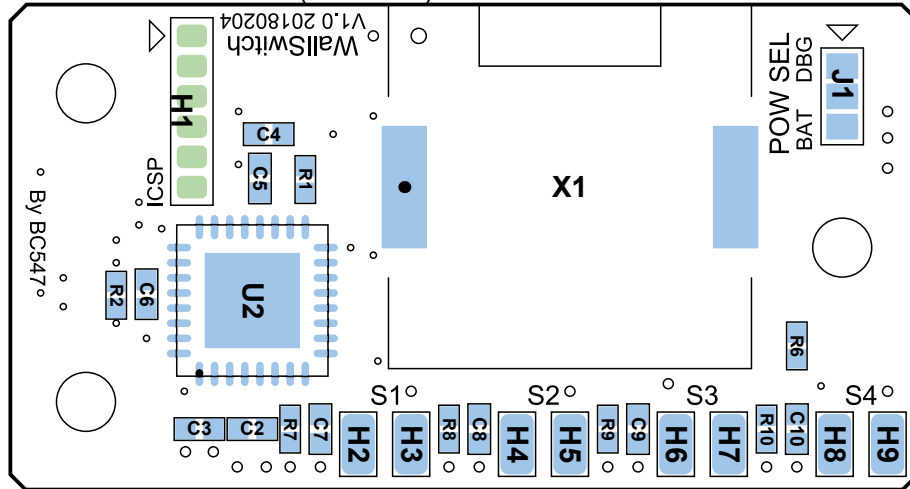
View from Front side (Scale 3:2)



View from Back side (Scale 3:2)



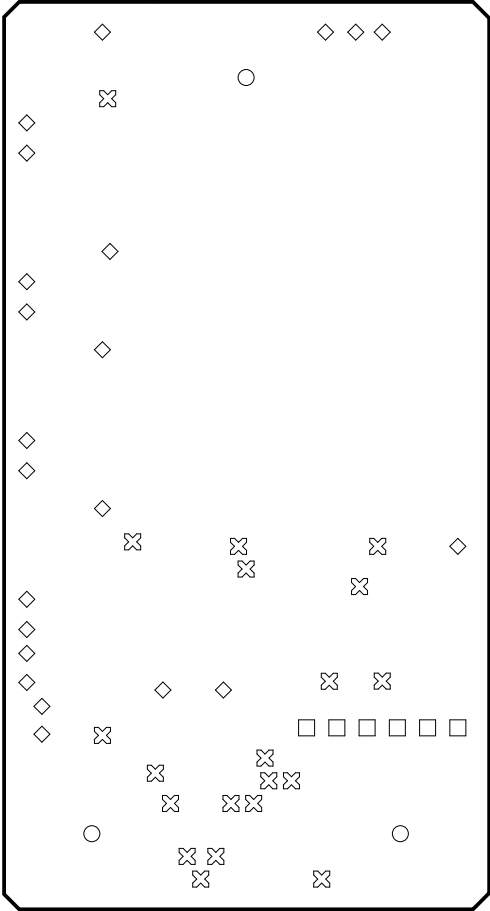
View from Bottom side (Scale 4:1)



Bill Of Materials (Assembly version)

Designator	Quantity	Name	Description
BAT1	1	Li-SOCl2 (3.6V, 1200mA)	Battery, 3.6 V, 1/2AA, Lithium Thionyl Chloride, 1200 mAh, PCB Pins, 14.2 mm
C1, C2, C3, C4, C5, C6, C7, C8, C9, C10	10	100nF/25V	SMD Multilayer Ceramic Capacitor, 0402 [1005 Metric], 0.1 µF, 25 V, ± 10%, X7R, MC Series
M1	1	RFM69CW-868	RFM69CW Programmable 868Mhz ISM Band RF Transceiver Module
R1	1	22R	SMD Chip Resistor, 22 ohm, 50 V, Thick Film, 0402 [1005 Metric], 62.5 mW, ± 1%
R2, R7, R8, R9, R10	5	4K7	SMD Chip Resistor, 4.7 kohm, 50 V, Thick Film, 0402 [1005 Metric], 62.5 mW, ± 1%
R3	1	10K	SMD Chip Resistor, 10 kohm, 50 V, Thick Film, 0402 [1005 Metric], 62.5 mW, ± 1%
R4, R5	2	340K	SMD Chip Resistor, 340 kohm, 50 V, Thick Film, 0402 [1005 Metric], 62.5 mW, ± 1%
R6	1	0R	SMD Chip Resistor, Ceramic, 0 ohm, 50 V, Thick Film, 0402 [1005 Metric], 62.5 mW, ± 0.05ohm
U1	1	TPL5010	Timer with Watchdog Function IC, 100 ms to 7200 s Intervals, 1.8 V to 5.5 V, SOT-23-6
U2	1	ATMEGA328P-MU	ATmega328p, 8 Bit Microcontroller, Low Power High Performance, 20Mhz, 32 KB, 2 KB, 32 Pins, MLF
X1	1	MCABT-458-RC	Transducer, 1 V to 25 V, Single, 75 dB, Sounder, 1 mA, SMD

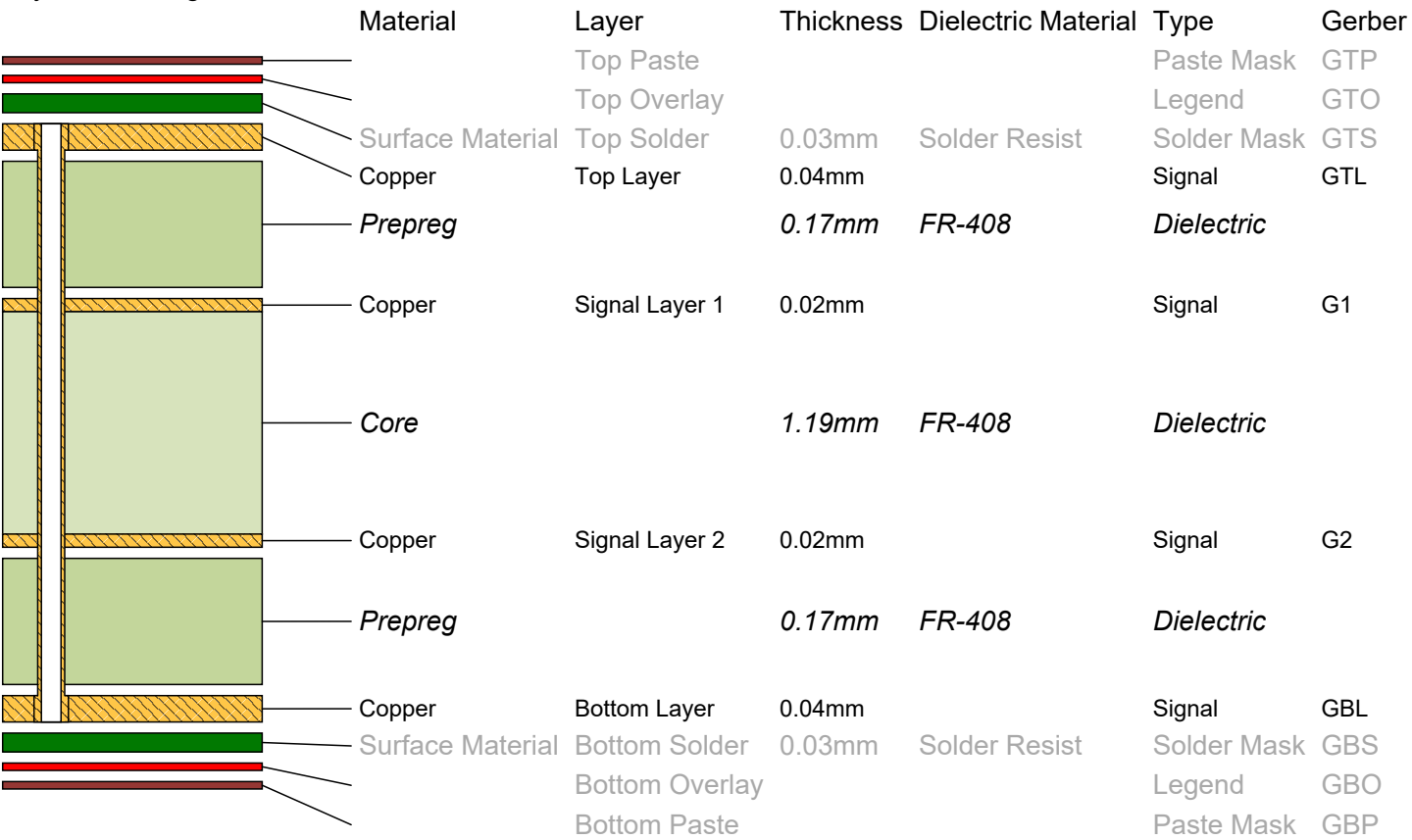
Drill Drawing View (Scale 4:1)



Drill Table

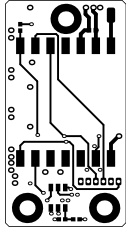
Symbol	Count	Hole Size	Plated	Hole Type	Pad Shape
⊠	20	0.25mm(10mil)	Plated	Round	
◇	22	0.38mm(15mil)	Plated	Round	
□	6	0.45mm(18mil)	Plated	Round	Rounded Rectangular
○	3	2.00mm(79mil)	Plated	Round	Rounded
	51 Total				

Layer Stack Legend

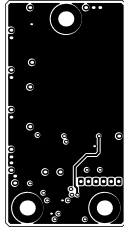


Total thickness: 1.69mm

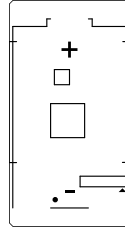
Top Layer (Scale 1:1)



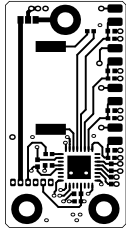
Signal Layer 1 (Scale 1:1)



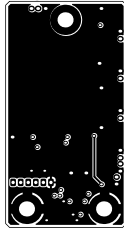
Top Overlay (Scale 1:1)



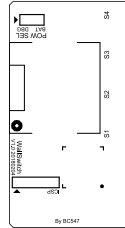
Bottom Layer (Scale 1:1)



Signal Layer 2 (Scale 1:1)



Bottom Overlay (Scale 1:1)



Bill Of Materials (Full version)

Lin e #	Name	Quantity	Designator	Manufacturer 1	Manufacturer Part Number 1	Supplier 1	Supplier Part Number 1
1	Li-SOCI2 (3.6V, 1200mA)	1	BAT1	Tadiran Batteries	SL-350/PT	Farnell	1187262
2	100nF/25V	10	C1, C2, C3, C4, C5, C6, C7, C8, C9, C10	Multicomp	MC0402B104K250CT	Farnell	2320759
3	RFM69CW-868	1	M1	HopeRF	RFM69CW-868	IdeeTron	RFM69CW-868
4	22R	1	R1	Multicomp	MCWR04X22R0FTL	Farnell	2447138
5	4K7	5	R2, R7, R8, R9, R10	Multicomp	MCWR04X4701FTL	Farnell	2447187
6	10K	1	R3	Multicomp	MCWR04X1002FTL	Farnell	2447096
7	340K	2	R4, R5	Multicomp	MCWR04X3403FTL	Farnell	2694598
8	0R	1	R6	Multicomp	MCMR04X000PTL	Farnell	2072513
9	TPL5010	1	U1	Texas Instruments	TPL5010DDCT	Farnell	2471144
10	ATMEGA328P-MU	1	U2	Microchip / Atmel	ATMEGA328P-MU	Farnell	1748522
11	MCABT-458-RC	1	X1	Multicomp	MCABT-458-RC	Farnell	2433031

