

A

B

C

D

A

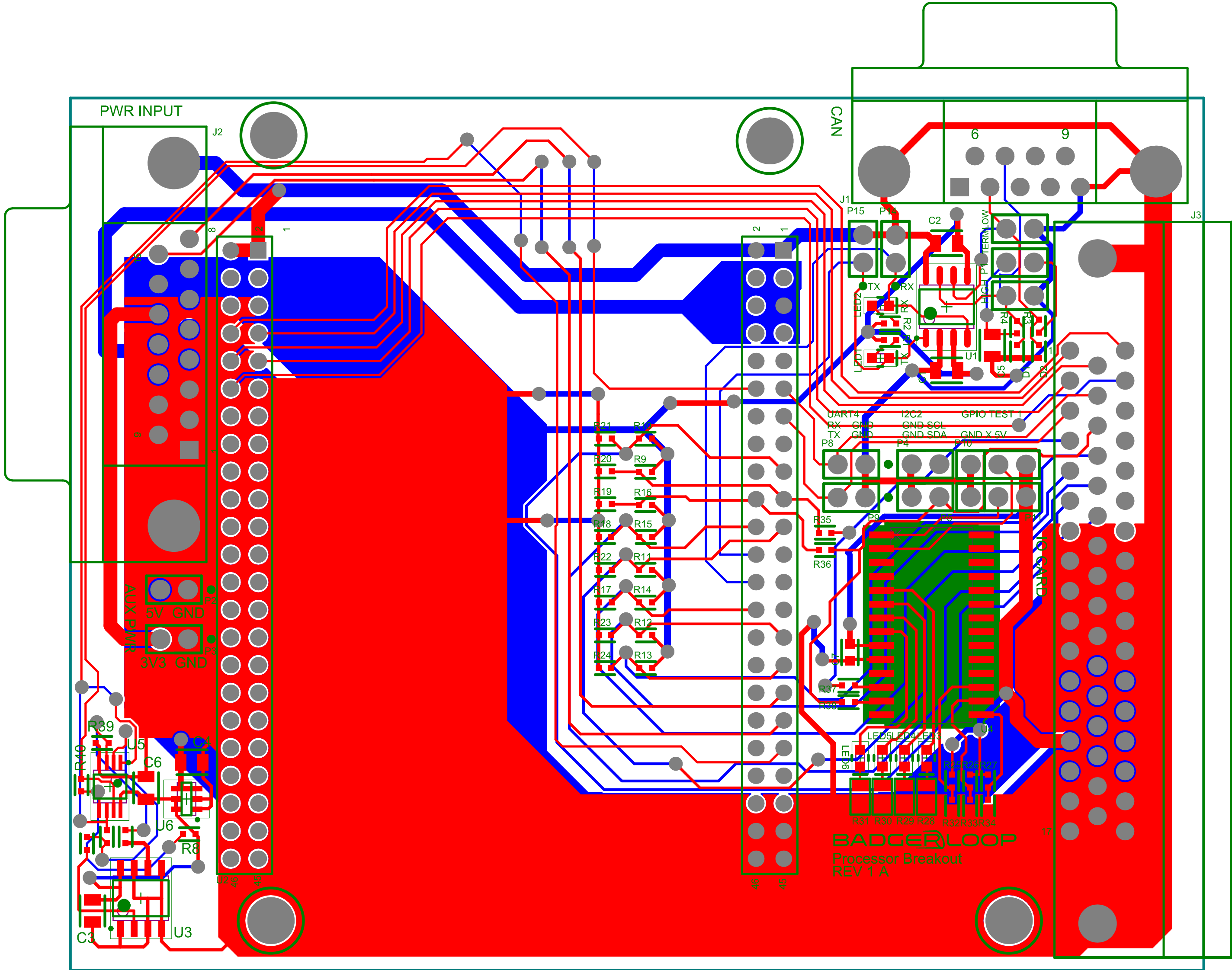
B

C

D

| Symbol | Count     | Hole Size           | Plated | Hole Type | Drill Layer Pair         | Via/Pad | Pad Shape | Template  |
|--------|-----------|---------------------|--------|-----------|--------------------------|---------|-----------|-----------|
| ▼      | 55        | 28.00mil (0.711mm)  | PTH    | Round     | Top Layer - Bottom Layer | Via     | Rounded   | v127h71   |
| ⊕      | 92        | 35.43mil (0.900mm)  | PTH    | Round     | Top Layer - Bottom Layer | Pad     | (Mixed)   | (Mixed)   |
| ☆      | 28        | 39.37mil (1.000mm)  | PTH    | Round     | Top Layer - Bottom Layer | Pad     | Rounded   | c180h100  |
| ○      | 24        | 42.91mil (1.090mm)  | PTH    | Round     | Top Layer - Bottom Layer | Pad     | (Mixed)   | (Mixed)   |
| ◇      | 50        | 43.31mil (1.100mm)  | PTH    | Round     | Top Layer - Bottom Layer | Pad     | Rounded   | c165h110  |
| □      | 4         | 102.36mil (2.600mm) | NPTH   | Round     | Top Layer - Bottom Layer | Pad     | Rounded   | c430hn260 |
| ⊗      | 2         | 122.05mil (3.100mm) | PTH    | Round     | Top Layer - Bottom Layer | Pad     | Rounded   | c351h310  |
| ⊗      | 2         | 125.20mil (3.180mm) | PTH    | Round     | Top Layer - Bottom Layer | Pad     | Rounded   | c480h318  |
| ▽      | 2         | 128.35mil (3.260mm) | PTH    | Round     | Top Layer - Bottom Layer | Pad     | Rounded   | c476h326  |
|        | 259 Total |                     |        |           |                          |         |           |           |

| Layer | Name           | Material      | Thickness | Constant | Board Layer Stack |
|-------|----------------|---------------|-----------|----------|-------------------|
| 1     | Top Overlay    |               |           |          |                   |
| 2     | Top Solder     | Solder Resist | 0.40mil   | 3.5      |                   |
| 3     | Top Layer      | Copper        | 1.40mil   |          |                   |
| 4     | Dielectric 1   | FR-4          | 12.60mil  | 4.8      |                   |
| 5     | Bottom Layer   | Copper        | 1.40mil   |          |                   |
| 6     | Bottom Solder  | Solder Resist | 0.40mil   | 3.5      |                   |
| 7     | Bottom Overlay |               |           |          |                   |



Bottom Layer

**BADGER  
LOOP**

Badgerloop  
ERB Room 133  
1400 Engineering Drive  
Madison, WI 53706

ENGINEER:  
R. Castle

PCB DESIGNER:  
R. Castle

DATE:  
1/21/2019

FILE NAME:  
processor\_pcb.PcbDoc

TITLE:

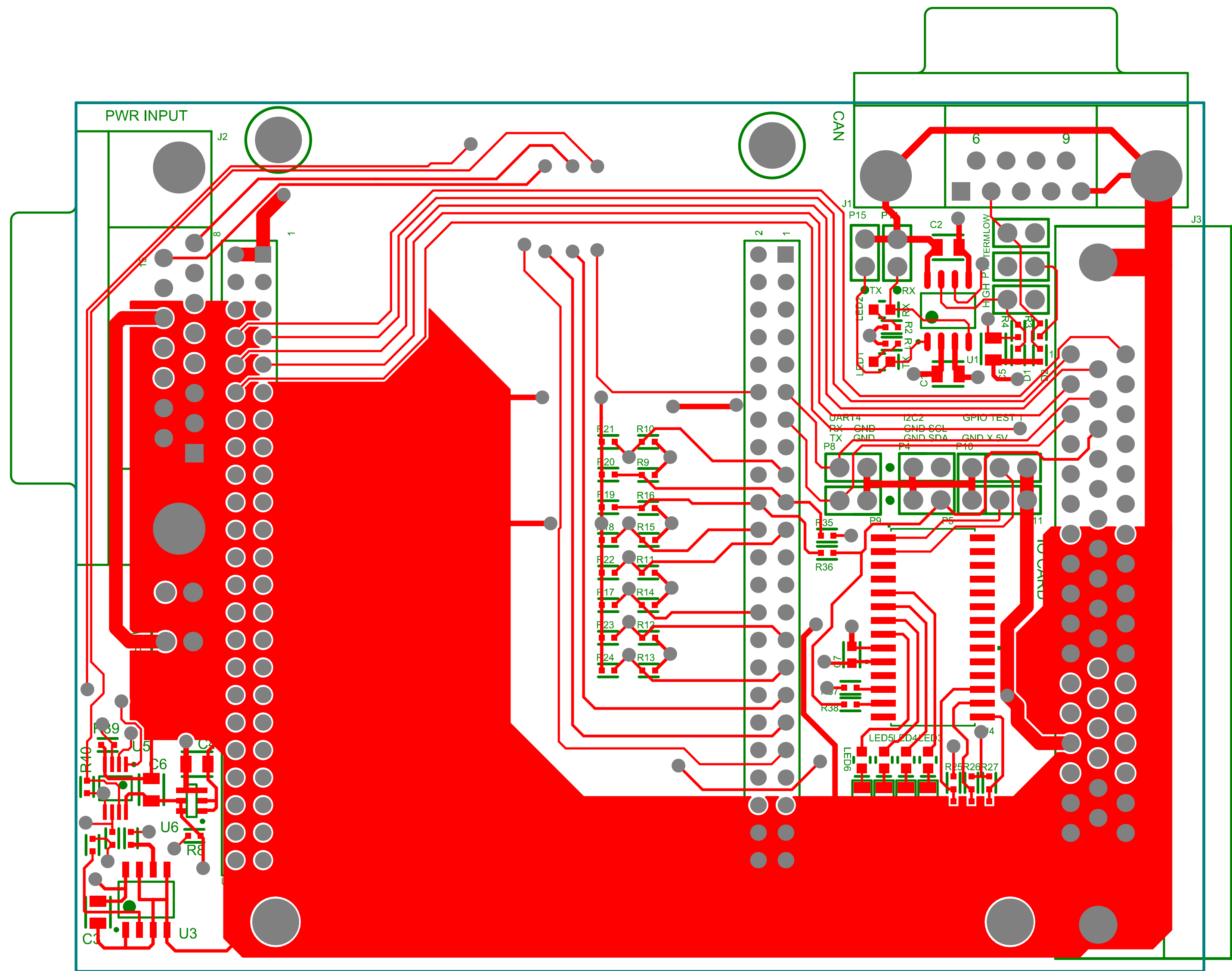
processor\_pcb.PcbDoc

PART NO.:  
P4\_LV\_Processor

REV:  
A

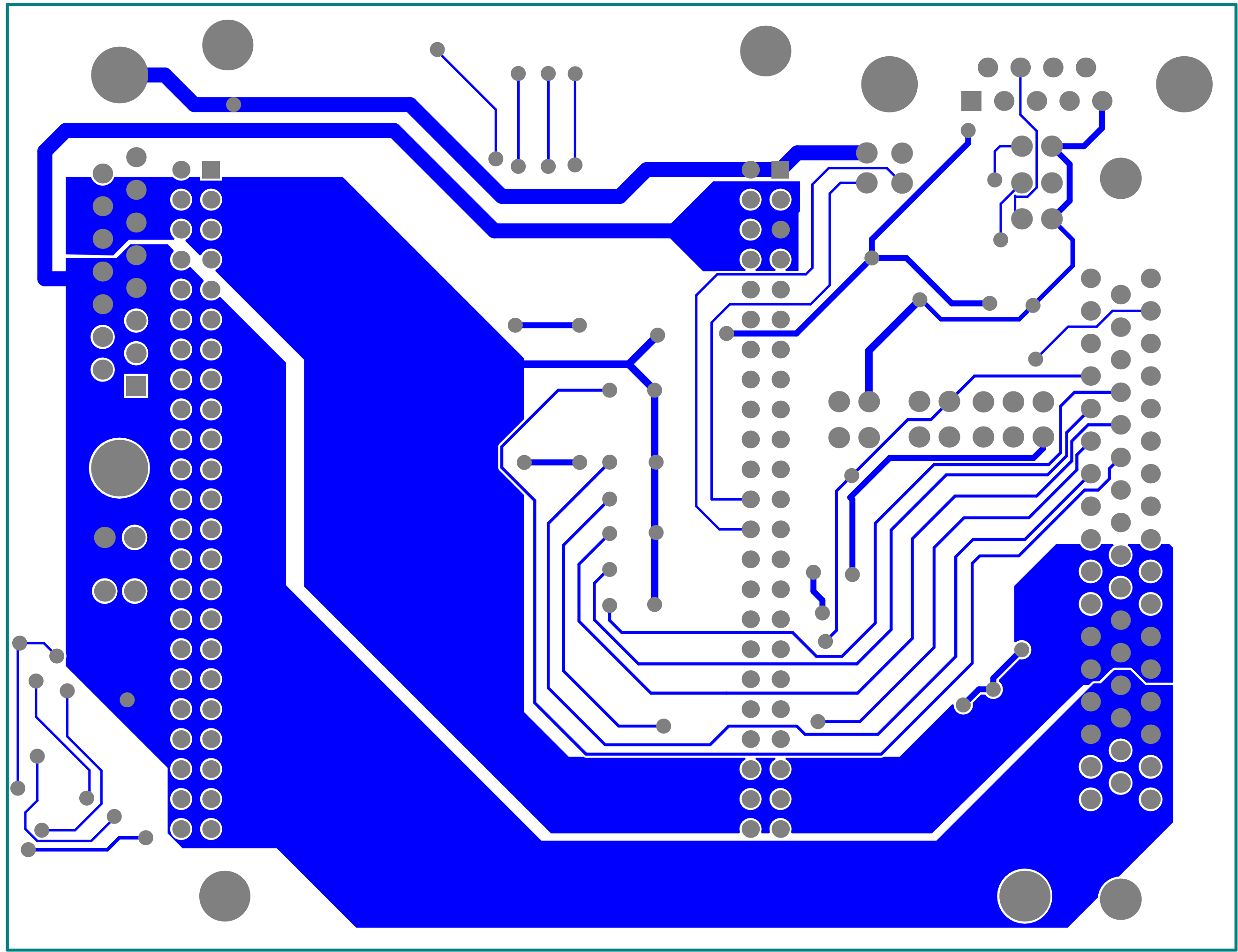
DWG NO:

SCALE:  
1:1



Top Layer

|   |                                    |                                |               |
|---|------------------------------------|--------------------------------|---------------|
| <div><div><div>BADGER<br/>LOOP</div></div><div>Badgerloop<br/>ERB Room 133<br/>1400 Engineering Drive<br/>Madison, WI 53706</div></div> | ENGINEER:<br>R. Castle             | TITLE:<br>processor_pcb.PcbDoc |               |
|   | PCB DESIGNER:<br>R. Castle         |                                |               |
|   | DATE:<br>1/21/2019                 | PART NO.:<br>P4_LV_Processor   | REV:<br>A     |
|   | FILE NAME:<br>processor_pcb.PcbDoc | DWG NO:                        | SCALE:<br>1:1 |



Bottom Layer

|   |                                    |                                    |               |
|---|------------------------------------|------------------------------------|---------------|
| <div><div><div>BADGER</div><div>LOOP</div></div><div>Badgerloop<br/>ERB Room 133<br/>1400 Engineering Drive<br/>Madison, WI 53706</div></div> | ENGINEER:<br>R. Castle             | TITLE:<br><br>processor_pcb.PcbDoc |               |
|   | PCB DESIGNER:<br>R. Castle         |                                    |               |
|   | DATE:<br>1/21/2019                 | PART NO.:<br>P4_LV_Processor       | REV:<br>A     |
|   | FILE NAME:<br>processor_pcb.PcbDoc | DWG NO:                            | SCALE:<br>1:1 |