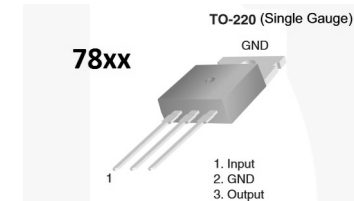
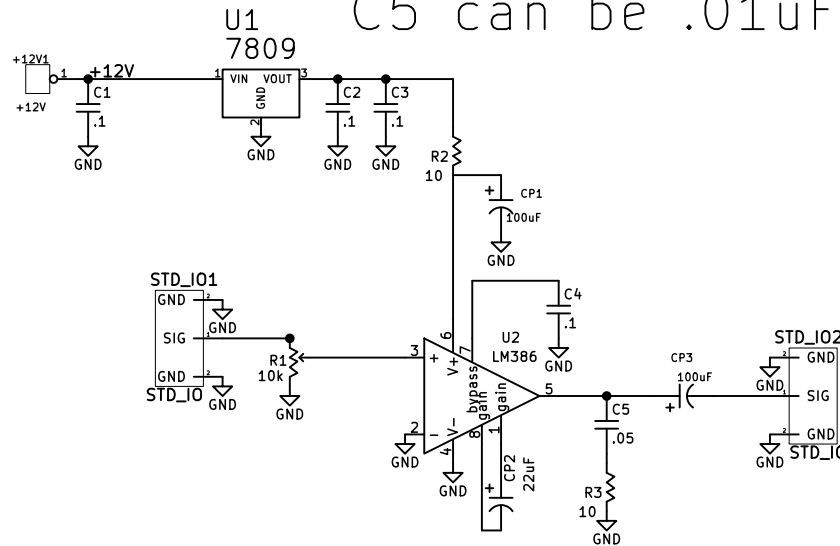
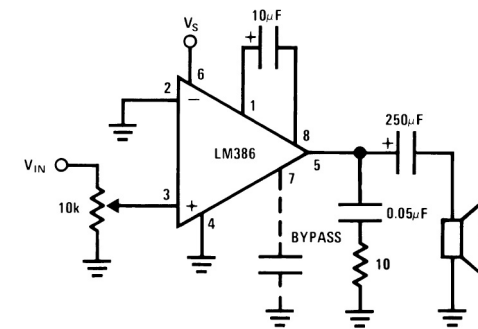


CP2 optional...vary for gain setting
Vreg can be 7810/7808/7806
R2 optional
C4 optional
Make CP1 larger for osc on large signals
C5 can be .01uF



Large value CP2 may cause stability problems depending on power and output wiring paths

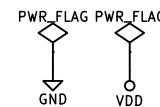
Amplifier with Gain = 200



Module: LM386 Audio Amp

WA7MLH

www.neoanderthal.com/wa7mlh.html



MOD_LM386.sch

Sheet: /

File: MOD_LM386.sch

Title:

Size: A4

Date:

KiCad E.D.A. kicad 4.0.2-stable

Rev:

Id: 1/1