

FABRICATION DRAWING

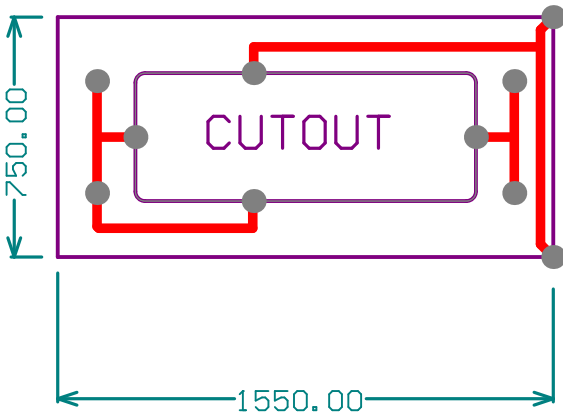
NOTES: (Unless otherwise specified)

1. Fabricate PCB in accordance with IPC-6012, Class 2, Type 3.
2. Material: Fabricate in accordance with IPC-4101
  - Copper Clad Laminates Isola 370HR or equiv., RoHS Compliant, Tg >= 170
  - 1/2 oz plated to 1 oz outer layers
  - 0.750 by 1.550 , 2 layers, 62.5 mils thick
3. Soldermask over bare copper shall be applied to both sides, per IPC-SM-840, Class T Liquid photo imageable, color yellow. Soldermask shall not be permitted on any component or connector solder pad.
4. Finish:
  - Plated thru holes minimum plating thickness: 1oz.
  - All exposed copper pads and vias shall be Lead-Free HASL finish.
5. SILKSCREEN: Silkscreen top side, color: white.
6. Bow and twist: Maximum allowed shall be 1%.
7. Tolerance: .xxx - 0.005, .xx = .01
8. Dimensionts and hole sizes shown are finished size and apply after plating.
9. Maximum front to back mis-registration allowed is .005
10. Minimum annular ring allowed is .005 external layers.
11. All dimensions in inches.

File list:

|                          |                              |
|--------------------------|------------------------------|
| DoggTagg_BattAdapter.GTP | TOP PASTE MASK               |
| DoggTagg_BattAdapter.GTO | TOP SILKSCREEN OVERLAY       |
| DoggTagg_BattAdapter.GTS | TOP SOLDER MASK              |
| DoggTagg_BattAdapter.GTL | LAYER 1 TOP (COMPONENT) SIDE |
| DoggTagg_BattAdapter.GBL | LAYER 2 BOTTOM (SOLDER) SIDE |
| DoggTagg_BattAdapter.GBS | BOTTOM SOLDER MASK           |
| DoggTagg_BattAdapter.GBO | BOTTOM SILKSCREEN OVERLAY    |
| DoggTagg_BattAdapter.GM1 | BOARD OUTLINE                |

|                              |                         |
|------------------------------|-------------------------|
| DoggTagg_BattAdapter_Fab.PDF | Fab Drawing (this file) |
| DoggTagg_BattAdapter.DRR     | Drill report (text)     |
| DoggTagg_BattAdapter.DRL     | Drill (binary)          |
| DoggTagg_BattAdapter.TXT     | Drill (text)            |



LAYER STACK-UP

|                                   | LAYER | MATERIAL                          |
|-----------------------------------|-------|-----------------------------------|
| ←                                 | GTO   | WHITE SILKSCREEN                  |
| ←                                 | TSM   | YELLOW SOLDERMASK                 |
| ←                                 | TOP   | 1OZ COPPER/HASL FINISH            |
| ←                                 | CORE  | CORE                              |
| ←                                 | BOT   | 1OZ COPPER/HASL FINISH            |
| ←                                 | BSM   | YELLOW SOLDERMASK                 |
| ←                                 | GBO   | WHITE SILKSCREEN                  |
| CONTROLLED IMPEDANCE NOT REQUIRED |       | OVERALL THICKNESS 0.062" ± 0.006" |

BOARD STATICTICS

|                          |          |
|--------------------------|----------|
| MINIMUM TRACE WIDTH      | 0.008"   |
| MINIMUM TRACE SPACE      | 0.006"   |
| MINIMUM DRILL SIZE       | 0.012"   |
| ASPECT RATIO (PCB/DRILL) | 5.21 : 1 |
| HOLE COUNT               | 10       |
| VIA COUNT                | 0        |
| PAD COUNT                | 10       |
| COMPONENT COUNT          | 10       |
| NET COUNT                | 3        |

|   |   |  |                               |
|---|---|--|-------------------------------|
| <b>HerdDogg, Inc.</b><br>258 A St. #1-74<br>Ashland, OR 97520 | ENGINEER:<br>J. Keto                      | TITLE:<br><b>HerdDogg</b><br>DoggTag Battery Adapter Board |                               |
|   | PCB DESIGNER:<br>J. Keto                  |  |                               |
|   | DATE:<br>9/23/2016                        | PART NO.:<br>Pxxxx   | BOARD REVISION:<br><b>X01</b> |
|   | FILE NAME:<br>DoggTagg_BattAdapter.PcbDoc | DWG NO:  | SCALE:<br><b>SCALE: 1.00</b>  |

