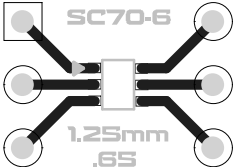


SC70-6



1.25mm
.65



SC70-6

A schematic diagram of an SC70-6 package mounted on a green PCB. The package is a dark grey rectangle with six gold-colored pads on its sides. A white triangle points to the leftmost pad. Six green traces connect the pads to six circular gold pads on the PCB. The top-left pad is square, while the others are circular. The text 'SC70-6' is at the top, and '1.25mm .65' is at the bottom.

1.25mm
.65